

Aperbio One-Stop Solution for Western Blot

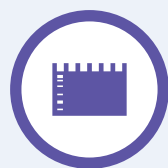


Western Blot Workflow



Sample Preparation

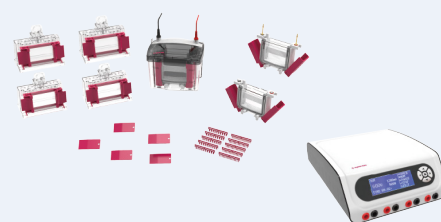
- RIPA Lysate
- Animal Protein Isolation Kit
- Bacterial Protein Isolation Kit
- Plant Protein Isolation Kit



Electrophoresis

Universal Electrophoresis Power Supply

- Basic Electrophoresis Power Supply
- High-Current Power Supply
- Mini Vertical Electrophoresis Cell



Transfer

Fast Transfer System

- Mini Vertical Blot
- Semi -Dry Electrophoretic Transfer Cell
- Fast Electrophoretic Transfer System



Blocking and Antibody Incubation

Autoblot WB process station

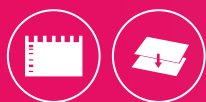


Imaging and Analysis

ONEblot Near-Field Chemi imager

- Ultrasensitive Chemiluminescent Substrate Liquid





Electrophoresis and Transfer

CycleBlot Fast Transfer System

Product Features:

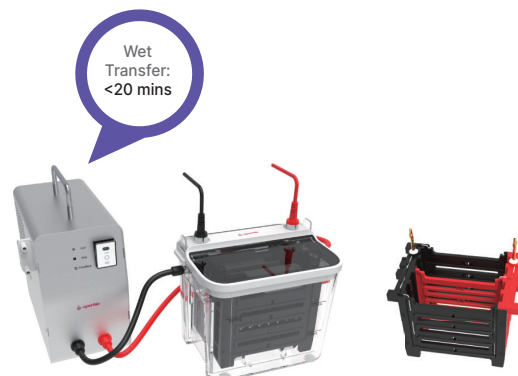
- Complete the wet transfer of 4 mini gels within 20 minutes.
- Transfer 200 KDa macromolecular proteins with high efficiency.
- Cold circulation system to avoid the need to use ice for cooling.

Technical Parameters:

Transfer Quantity: 1-4 mini gels

Refrigeration Circulator: Peltier

Electrodes: U-shaped Dual-channel Electrode Plates



Power Universal 600 Universal Electrophoresis Power Supply

Product Features:

- The voltage and current required to meet the electrophoresis of 4 gels and the rapid wet transfer of 4 membranes.
- The power supply automatically transitions from the stacking gel to the resolving gel program.
- Automatically switch to micro-current mode post-electrophoresis to avoid sample diffusion.



Technical Parameters:

Power Universal 600 Universal Electrophoresis Power Supply	Voltage: 5-600 V	Current: 1-1200 mA	Power: 1-500 W
Power Basic 300 Basic Electrophoresis Power Supply	Voltage: 5-300 V	Current: 1-400 mA	Power: 1-75 W
Power HC 3000 High-Current Power Supply*	Voltage: 5-250 V	Current: 1-3000 mA	Power: 1-300 W

* Recommend to be used with Single SD TBLOT.

miniPRO4 Mini Vertical Blot

Product Features:

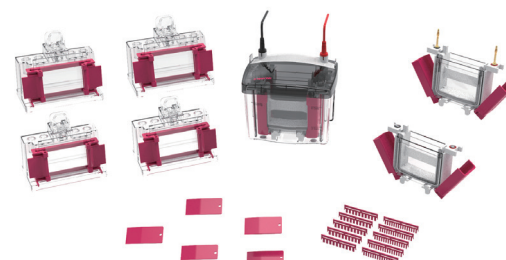
- Capable of running 1 to 4 hand-made or precast gels simultaneously.
- The gel casting frame is corrosion-resistant, crack-proof, and has a long service life.
- Supply the super elastomer sealing gasket to ensures no liquid leakage during gel preparation.

Technical Parameters:

Number of gels: 1-4

Gel thickness: 1.0 mm (standard), 0.75 mm and 1.5 mm (optional)

Comb specifications: 10-well and 15-well





Blocking and Antibody Incubation

Auto 12 Autoblot WB Process Station

Product Features:

- Fully Automatic:**

Automatically complete the steps of blocking, primary and secondary antibody incubation, and washing.

- High-Throughput:**

Equipped with 12 independently-controlled channels, capable of incubating 24 blot membranes simultaneously in one run.

- Temperature-Controllable:**

Utilizes a Peltier temperature control system, with a temperature range adjustable from 2°C to 40°C.

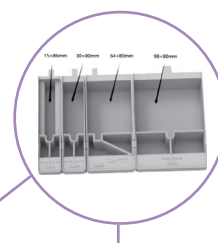
- Antibody Recyclable:**

Supports antibody recycling, with a recovery rate of over 95%.

- High Flexibility:**

Allows multiple users to load samples for experiments at any time.

Manual operation time: 5 mins

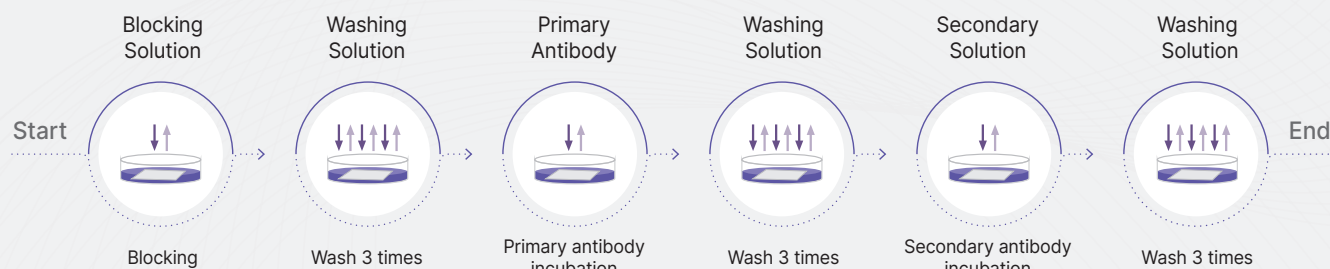


Four sizes of incubation chambers available, and they support mixed-matching for use.



Multiple mode selection: step temperature control, constant temperature, room temperature mode, etc.

Conventional blocking and antibody incubation workflow:



Auto 12 Autoblot WB Process Station Workflow



Support multiple users to load samples at any time and automatically complete the steps of blocking, antibody incubation, and washing.

Manual operation time: 5 mins





ONEBlot Near-Field Chemi Imager

Product Features:

- **High Sensitivity:**

Equipped with Lens-free imaging technology and a large-format 170 cm² high-sensitivity sensor, its sensitivity is two orders of magnitude higher than that of traditional CCDs.

- **Ultra-Speed:**

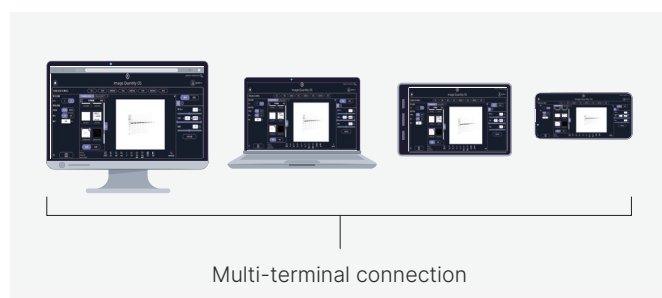
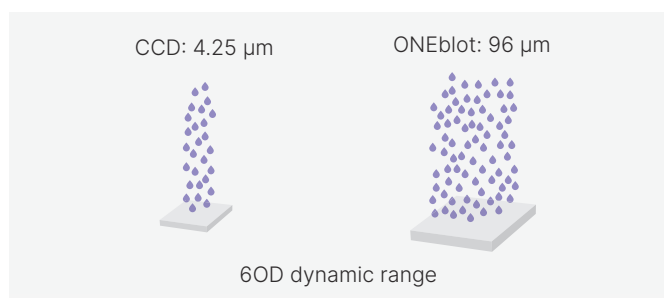
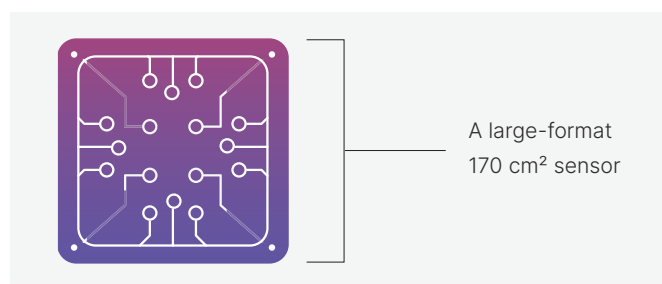
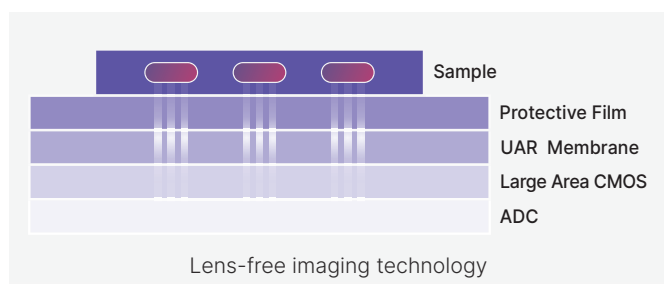
Complete the image acquisition of chemiluminescent signals within 1 second, eliminating the need for waiting.

- **High Dynamic Range:**

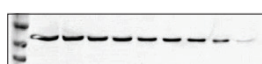
Boast a 6OD dynamic range, enabling simultaneous quantification of both strong and weak signals for more accurate results.

- **Ultra-Smart:**

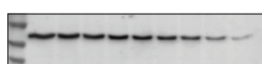
Support OTA upgrades and multi-terminal connections for greater convenience.



Example 1



ONEblot- 2 ms Imaging



CCD - 10 s Imaging

Example 2

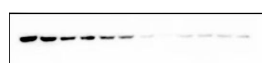


ONEblot - 500ms imaging



CCD - 2 mins imaging

Example 3



ONEblot - 1 s Imaging



Film Imaging: 5 mins

Example 4

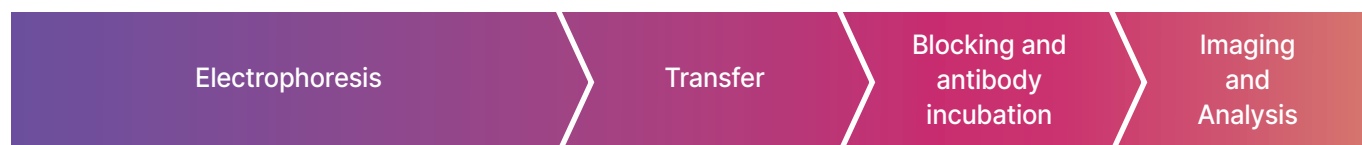


ONEblot - 1 s imaging

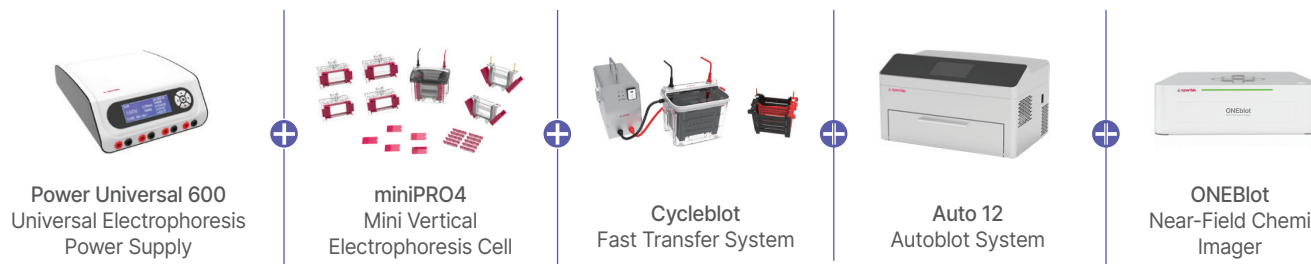


CCD - 3 mins imaging

Aperbio Western Blot Product Combinations



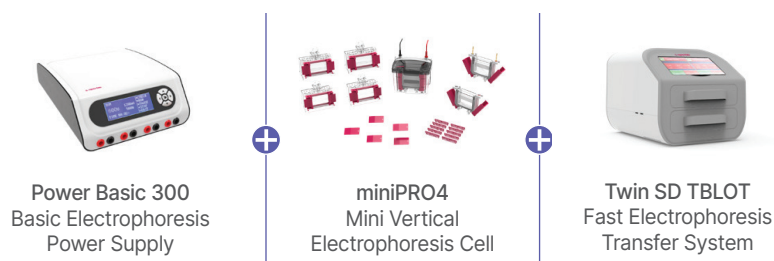
Recommended WB Components



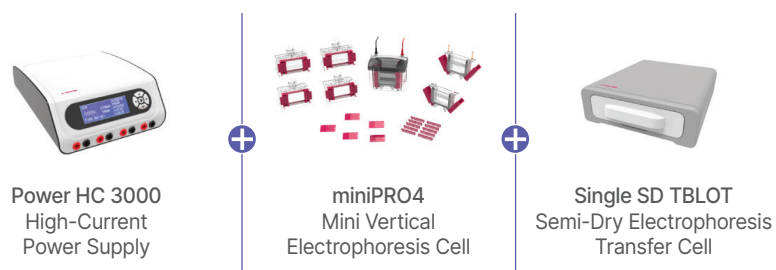
Basic WB Components



Basic WB Fast/Semi-Dry Transfer Components



Senior WB Fast/Semi-dry Transfer Components



Ordering Information

Cat. Number	Description
511001	ONEblot Near-Field Chemi Imager , High sensitivity, chemiluminescence imaging in 1 second
351000	Auto 12 Autoblot Western Blot Process Station , Automatically complete the steps of blocking, primary and secondary antibody incubation, and washing. With a temperature range adjustable from 2°C to 40°C
316001	Power Universal 600 , Universal Electrophoresis Power Supply, 600V, 1200mA, 500W
313001	Power basic 300 , Basic Electrophoresis Power Supply, 300V, 400mA, 75W
312501	Power HC 3000 , High-Current Power Supply, HC3000, 250V, 3000mA, 300W
320002	miniPRO2 , Mini Vertical Electrophoresis Cell, 2-gel system
320004	miniPRO4 , Mini Vertical Electrophoresis Cell, 4-gel system
333001	CycleBlot , Fast Transfer System, 4 cassettes
331002	TBLOTmini , Mini Vertical Blot, 2 cassettes
331004	TBLOTmini4 , Mini4 Vertical Blot, 4 cassettes
332002	Single SD TBLOT , Semi-Dry Electrophoretic Transfer Cell, supporting 2 mini gel for fast transfer, need to be paired with a HC power supply
332004	Twin SD TBLOT , Fast Electrophoretic Transfer system, Support 1-4 pieces of gel fast transfer, Built-in power supply
110009500	30% (29:1) Acrylamide/Bis-Acrylamide Solutions, 500 ml
110012500	40% (29:1) Acrylamide/Bis-Acrylamide Solutions, 500 ml
110036100	Ultrasensitive Chemiluminescent Substrate Liquid, 100 ml
110018025	RIPA Lysate (Strong), 25 ml
110019025	RIPA Lysate (Weak), 25 ml
110020025	RIPA Lysate (Medium), 25 ml
110039025	Animal Protein Isolation Kit, 25 preps
110055025	Bacterial Protein Isolation Kit, 25 preps
110060025	Plant Protein Isolation Kit, 25 preps
110049010	Immune Signal Enhancement Kit, 10 rxns
110049050	Immune Signal Enhancement Kit, 50 rxns



Visit aperbio.com/western-blot/ to learn more about the **Aperbio One-Stop Solution for Western Blot**.



For further information, please contact the Aperbio office nearest you or visit our website at [aperbio.com](https://www.aperbio.com)



Aperbio Technologies (Suzhou) Co., Ltd.

Room 212-216, Building 2, No. 8 Jinfeng Road,
Suzhou New District, Jiangsu, China.

Tel: +86 512 8686 0010

Email: info@aperbio.com

Aperbio Technologies (Singapore) Pte. Ltd.

3 International Business Park, #02-22,
Nordic European Centre, Singapore 609927.

Email: infoapac@aperbio.com

