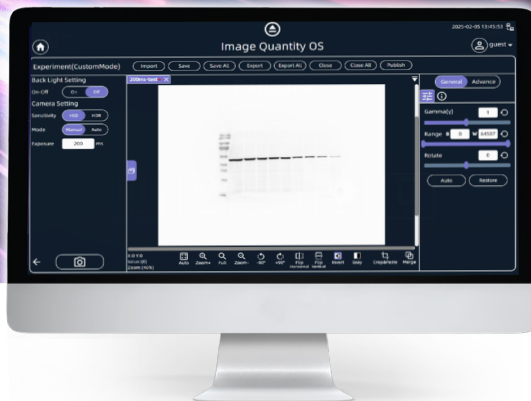


ONEblot Imaging System

Near-Field Chemiluminescent Imager



Sensitive • Speed • Smart

Features



Enhanced Sensitivity

Sensitivity improved by 2 orders of magnitude compared to traditional CCDs, making it ideal for weak signal detection.



1-Sec Imaging

Equipped with a large-format CMOS sensor of 170 cm², pixel size of 96 μm x 96 μm, up to 95% of samples 1-second imaging.



6 Orders of Dynamic Range

Full well capacity exceeds 6 million e⁻, not easy to oversaturate.



Support OTA Upgrade

A high-performance state always maintained.



Multi-Terminal Use

Compatible with laptops, tablets, smartphones, and devices with displays, etc.

Applications

Western blotting

Chemiluminescence imaging and quantitative analysis

Protein gel imaging

Coomassie blue staining, silver staining, etc.

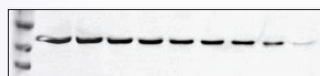
Dot blotting

Chemi imaging and quantitative analysis without electrophoresis

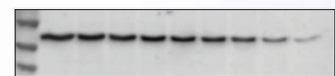
Nucleic acid blotting

Southern blot and Northern blot

Case 1

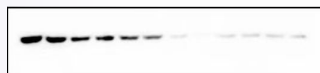


ONEblot - 2ms imaging



CCD - 10s imaging

Case 2

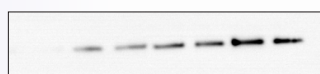


ONEblot - 500ms imaging

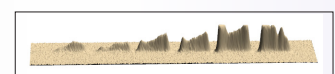


CCD - 2 mins imaging

Case 3



ONEblot - 500ms imaging



ONEblot - 500ms imaging

ONEblot: Usher in a new era of Western Blotting Chemiluminescence detection with ingenuity and pre-eminent performance



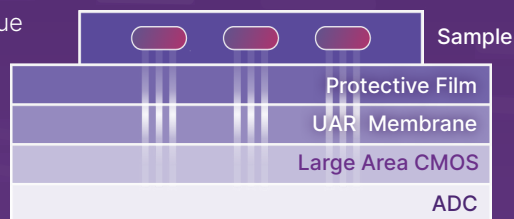
Near-field lens-free imaging technology innovation

- Eliminate diffraction interference to achieve ultimate image clarity
- Utilize an ultra-short optical path for lossless image transmission
- Completely break away from the lens limitations and redefine the standard of image quality



High-performance anti-reflection films, designed for optimal imaging quality

- Utilize specialized materials and a unique structure to enhance light utilization while minimizing light reflection
- Near-zero reflection by multilayer film interference, enhancing sensitivity and image quality



Large-format image sensor, capturing subtle signals with precision

- A large-format 170 cm² CMOS sensor designed for high-sensitivity imaging
- Excellent charge capacity enabling accurate and quantitative analysis
- Low noise performance facilitating better detection of weak signals



High-speed imaging, enhanced detection efficiency

- Rapid detection: Imaging within 200 ms to 1 second for most samples



Originality and a perfect blend of engineering and fashion aesthetics

- Featuring an alloy body with sleek lines, the device ensures long-term stable operation through efficient heat dissipation
- Enhance chip performance through neural networks to obtain quick and accurate image analysis
- Integrate with a high-performance computing core to achieve efficient data analysis

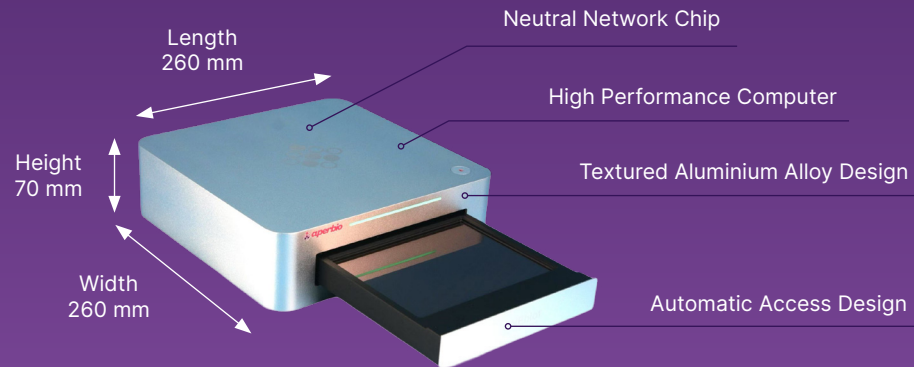
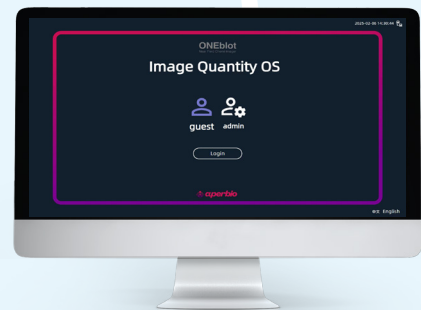


Image Quantity OS Software

- Wizard-like operation mode for reducing the user learning curve and making the software more intuitive and user-friendly
- Convenient data classification, retrieval, editing and sharing through Album-style data management model
- HSD and HRD capture modes, meet different customer needs
- Automatic marker merging function
- Multi-terminal connection control: compatible with laptops, tablets, cellphones, and display devices, etc.



- Support OTA online software updates for continuous improvement and maintenance

Comprehensive Western Blot Solutions



With over a decade of expertise in western blotting, our team of seasoned scientists has crafted an array of top-tier products and services designed to bolster your research endeavors. We are dedicated to furnishing you with the critical tools and profound knowledge necessary for the successful execution of Western blotting techniques.



Recommended WB Components



Power Universal 600:
Universal Electrophoresis
Power Supply



miniPRO4:
Mini Vertical
Electrophoresis Cell



CycleBlot:
Fast Transfer System



Auto 12:
Autoblot System



ONEBlot:
Near-Field Chemi
Imager

Specifications

Pixel Size	96 μm x 96 μm
Chip Size	170 cm ²
Dynamic Range	6 OD
Full Well Capacity	> 6,000,000 e ⁻
Control Method	Laptops, tablets, smartphones, or devices with displays
Sample Chamber	Automatic electrical entry and exit to achieve ideal darkroom standards
OTA Upgrade	Maintain the machine always at high performance state
1s Imaging	95% of samples can be imaged within 1 second
Imaging Area	147.36 × 115.3 mm
Machine Size	26 × 26 × 7 cm

Ordering Information

Cat. Number	Description
511001	ONEblot Near-Field Chemiluminescent Imager
351000	Autoblot Western Blot Process Station
313001	Basic Electrophoresis Power Supply, 300V, 400mA , 75W
316001	Universal Electrophoresis Power Supply, 600V, 1200mA, 500W
312501	High-Current Power Supply, 250V, 3000mA, 300W
315001	High-Voltage Power Supply, 500V, 2500mA, 500W
316002	Multi Functional Electrophoresis Power Supply, 600V, 1200mA, 500W
320002	Mini Vertical Electrophoresis Cell, 2-gel system, 10-well and 15-well
320004	Mini Vertical Electrophoresis Cell, 4-gel system, 10-well and 15-well
321002	Precast Gels Electrophoresis Cell, 2-precast gel system
321004	Precast Gels Electrophoresis Cell, 4-precast gel system
331002	Mini Vertical Blot, 2 gel holder cassettes, 100× 75 mm
331004	Mini4 Vertical Blot, 4 gel holder cassettes, 95 × 80 mm
332002	Semi -Dry Electrophoretic Transfer Cell
332004	Fast Electrophoretic Transfer System, 2 cassettes
333001	CycleBlot Fast Transfer System, wet transfer, 4 mini gel



Visit [aperbio.com/oneblot-near-field-high-sensitivity-chemiluminescence-imager](https://www.aperbio.com/oneblot-near-field-high-sensitivity-chemiluminescence-imager) to learn more about the **ONEblot Imaging System**.



For further information, please contact the Aperbio office nearest you or visit our website at [aperbio.com](https://www.aperbio.com)



Aperbio Technologies (Suzhou) Co., Ltd.

Room 212-216, Building 2, No. 8 Jinfeng Road,
Suzhou New District, Jiangsu, China.

Tel: +86 512 8686 0010

Email: info@aperbio.com

Aperbio Technologies (Singapore) Pte. Ltd.

3 International Business Park, #02-22,
Nordic European Centre, Singapore 609927.

Email: infoapac@aperbio.com

